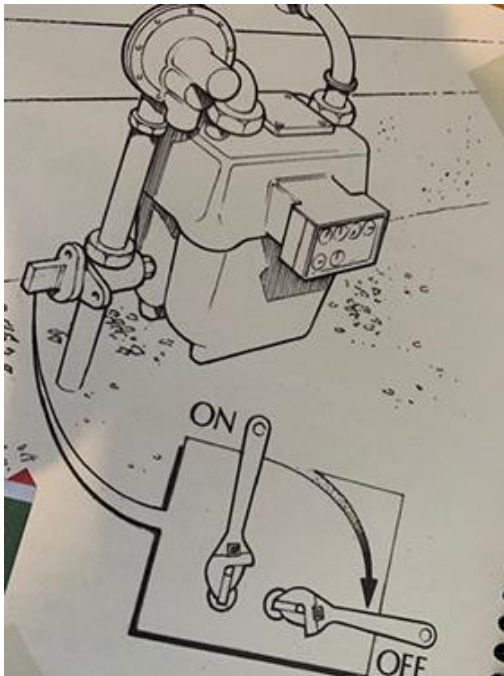




**JUNE 2021 – TIP OF THE MONTH #10**  
**From the GHNA Disaster Preparedness Committee**

## ***SMELLING GAS? HOW TO TURN IT OFF***



If you smell or hear gas leaking in an emergency such as an earthquake, you should turn it off. The turn-off valve is near your gas meter and runs parallel to your gas pipe.

Using a wrench, a multi-tool or a tool designed specifically for this purpose, move the shut-off valve to a horizontal position. If your shut-off valve is caked with paint, tap it gently to break the seal. You may want to tie the tool to the gas valve so it is easily accessible.

It is highly recommended that you have a professional from the gas company turn the gas back on.

***HOW TO SHUT OFF AND RESTART YOUR GAS LINE IN CASE OF EMERGENCY***



# **GARFIELD HEIGHTS NEIGHBORHOOD ASSOCIATION**

email: [info@garfieldheights.org](mailto:info@garfieldheights.org) Website: [www.garfieldheights.org](http://www.garfieldheights.org)

FaceBook: Garfield Heights Neighborhood Association

Mailing address: 1185 N. Marengo Ave., Pasadena, CA 91103 Phone: (626) 394-4777